

The Value of Heritage for Sustainable Development and How to Evaluate It: SoPHIA Model

Uzelac, Aleksandra; Tišma, Sanja; Franić, Sunčana

Other document types / Ostale vrste dokumenata

Publication year / Godina izdavanja: **2024**

Permanent link / Trajna poveznica: <https://um.nsk.hr/um:nbn:hr:308:414759>

Rights / Prava: [Attribution-NonCommercial-NoDerivatives 4.0 International/Imenovanje-Nekomercijalno-Bez prerada 4.0 međunarodna](#)

Download date / Datum preuzimanja: **2025-01-07**

IRMO

Repository / Repozitorij:

[The Repository of the Institute for Development and International Relations - The institutional repository for storing papers and datasets.](#)

The Value of Heritage for Sustainable Development and How to Evaluate It: SoPHIA Model

Summary

The SoPHIA H2020 project (Social Platform for Holistic Heritage Impact Assessment) developed a comprehensive model to assess the impact of interventions of cultural heritage on the development of communities. This model addresses the need for multidimensional evaluation in heritage projects, incorporating social, cultural, economic, and environmental factors. The project had aligned with the EU's strategic goals of promoting sustainable and inclusive growth, recognizing cultural heritage as a key resource for resilience and innovation.

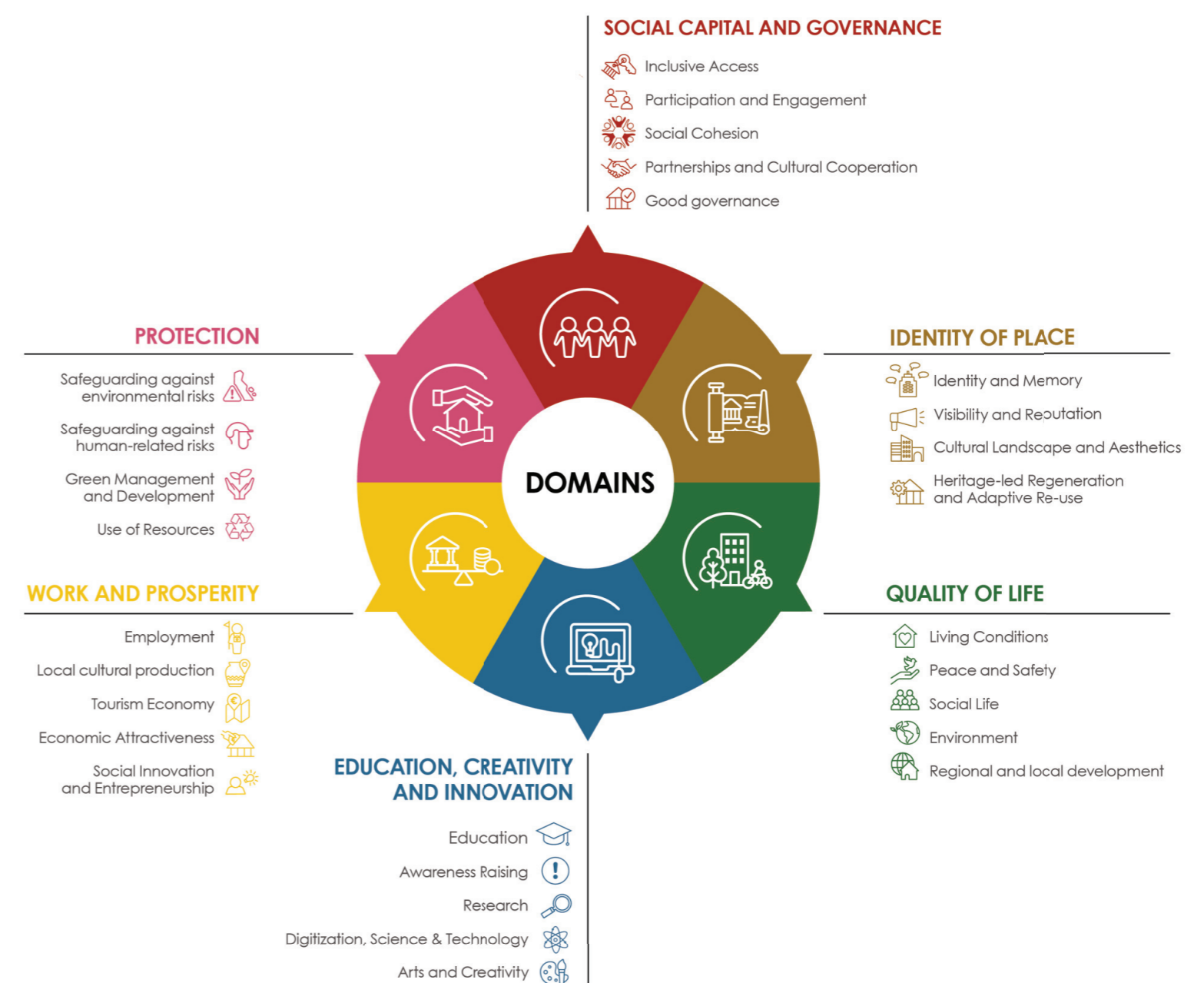
SoPHIA's model is structured around three axes:

- time - assessing impacts of heritage interventions before, during, and after interventions
- stakeholders - ensuring inclusive participation
- domains - integrating multidisciplinary perspectives for evaluating the social, cultural, economic, and environmental impacts of heritage projects.

By including both qualitative and quantitative indicators, the model measures the effectiveness of heritage projects in contributing to social cohesion, cultural diversity, economic growth, and environmental sustainability.

This holistic approach ensures that cultural heritage is preserved and adapted to contemporary needs, promoting community engagement and long-term sustainability. SoPHIA Model's application in Croatia has provided critical insights into national policies, demonstrating the value of robust impact assessments for future heritage interventions.

The SoPHIA multi-domain impact assessment framework for interventions in the field of cultural heritage



For more information please visit:



SoPHIA model – three axes

Holistic approach to impact assessment

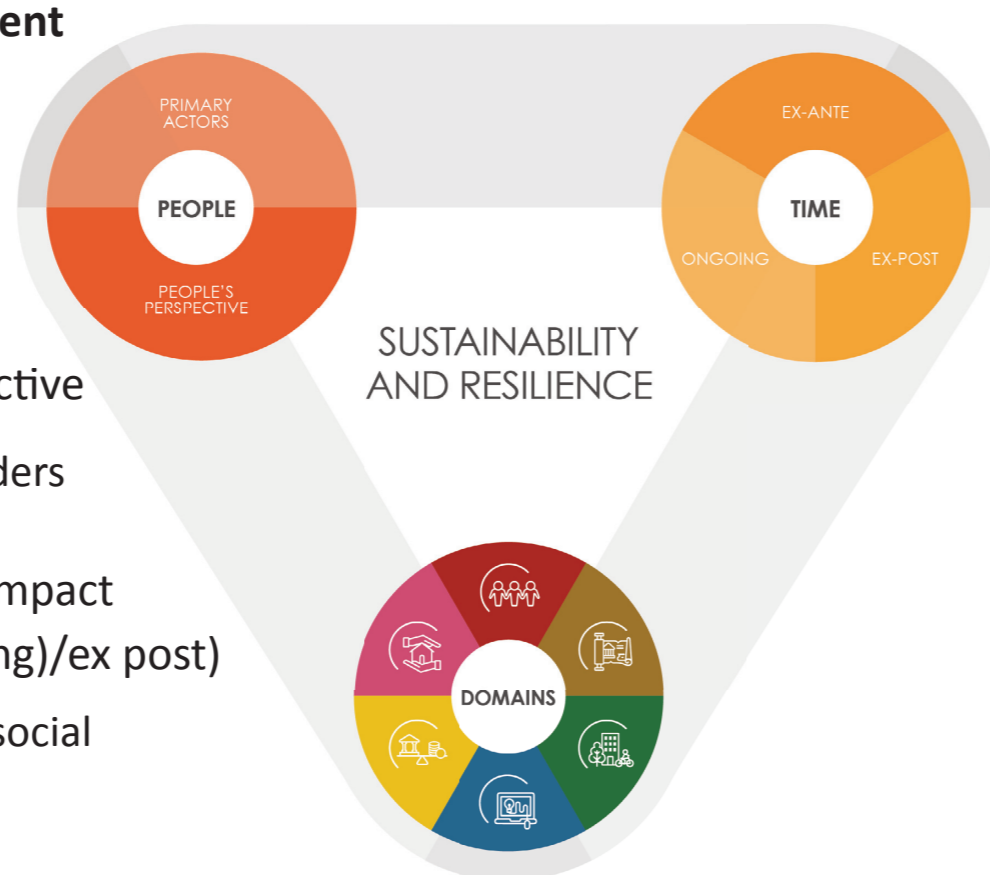
- economic, environmental, cultural and social dimensions of the assessment -> qualitative and quantitative elements

Ensuring a **multi-stakeholder** perspective

- identifying and defining key stakeholders

Determining the **time** dimension of impact assessment (ex ante/mid-term (onging)/ex post)

- evaluate in advance and assess the social consequences

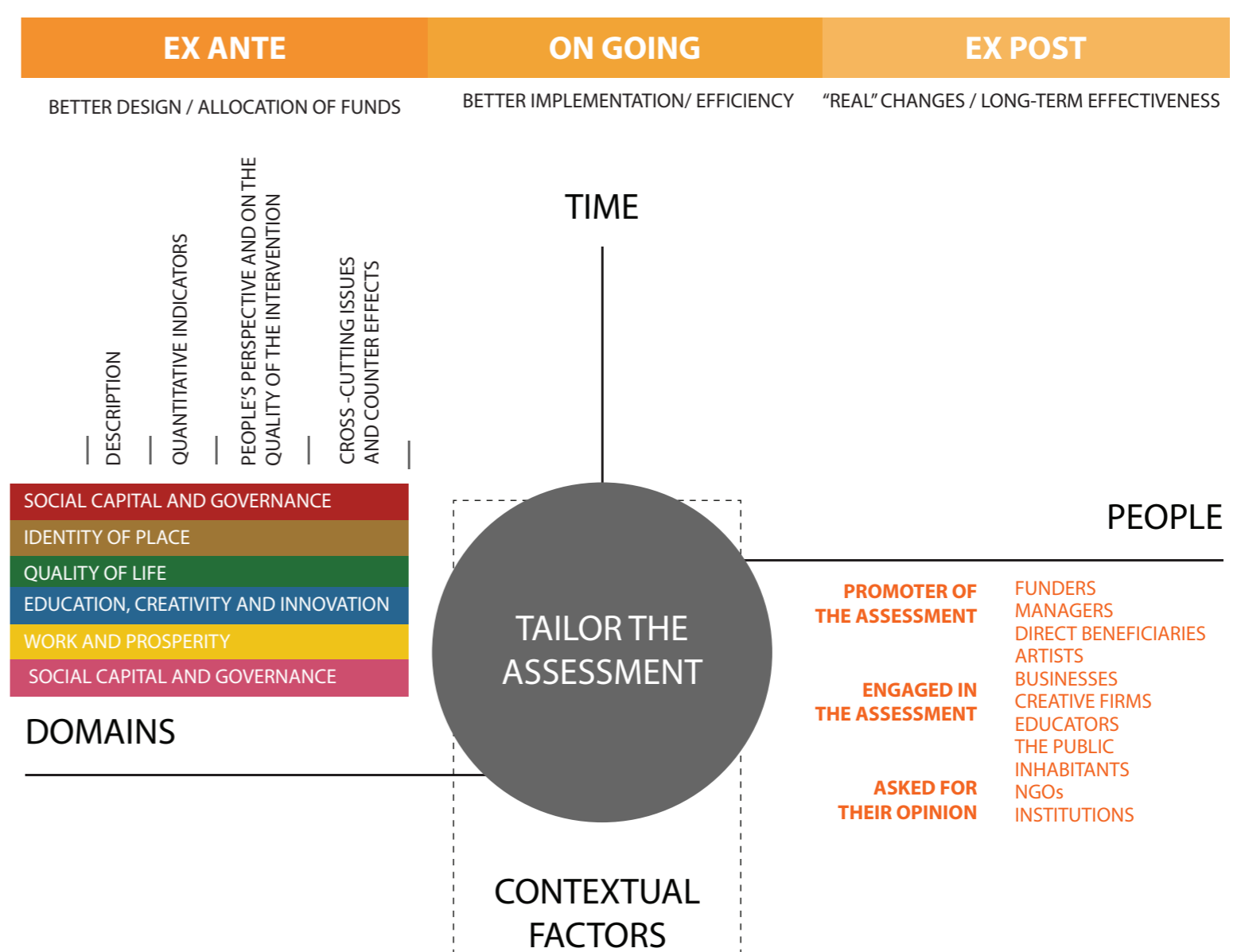
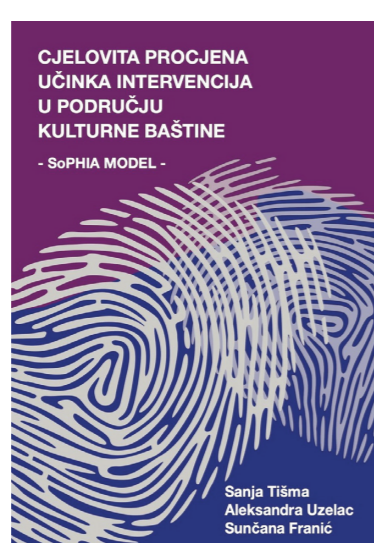


The SoPHIA Multi-Domain Assessment Framework

Theme	Six areas of impact are included in the framework that covers cultural, social, economic, and environmental issues.
Subtheme	Each theme is evaluated through a number of subthemes for which a list of possible indicators and guiding questions have been provided.
Description	In the description, the aim of the IA is highlighted for each subtheme that provides a focus for the user when adapting the framework. E.g., <i>the aim is to assess whether intervention ensures accessibility of CH resources to all groups of society.</i>
Quantitative indicators	List of possible indicators that support the IA analysis (pointing to the information to be collected).
People's perspective and Quality of intervention	List of proposed guiding questions aiming at collecting stakeholders' inputs.
Cross-cutting issues	Cross-cutting issues and counter-effects show the relevant interconnections between themes and subthemes and the potential counter-effects.
Counter effects	As the themes are highly interconnected, it is possible to provide a holistic impact assessment only by understanding the cross-cutting issues and counter-effects between the themes.

Outcome in Croatia:

Cjelovita procjena učinka intervencija na području kulturne baštine - SoPHIA model (Jesenski i Turk, 2023)



IRMO

Institut za razvoj i međunarodne odnose
Institute for Development and International Relations